

Professional and Medical Office Space For Lease



- Located at the new westbound exit of I-475 and Central Avenue
- Great exposure - over 40,000 vehicles per day
- Highly Visible Electronic Signage on Central Avenue
- New construction
- Generous finish allowance included
- No city income taxes
- Located at stoplight on Central with Central Ave. Direct Curb Cut

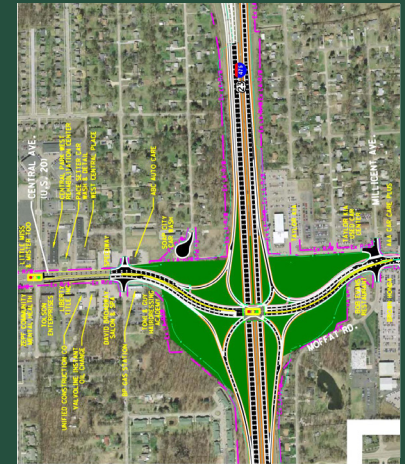
**3130 CENTRAL PARK WEST
Sylvania Township**

PROPERTY INFORMATION

COUNTY:	Lucas
ZIP CODE:	43617
AREA OF CITY:	Sylvania Township
NEAREST INTERSECTION:	Central/I-475
TRAFFIC MANAGEMENT:	Traffic light fully synchronized with I-475 Exit, Curb Cut entrance directly from Central Ave.
SIGNAGE:	Highly Visible Electronic sign located on Central Avenue
PARKING:	Free
LEASE PRICE:	\$18.00 NNN New Construction Office \$16.00 NNN Existing Space

BUILDING DETAIL

TOTAL BUILDING SIZE:	29,520 SF
NEW CONSTRUCTION:	8,120 SF
EXISTING SPACE: (on Central Ave.)	6,020
YEAR COMPLETE:	2020 and New Construction
NUMBER OF FLOORS:	One (1)
CONSTRUCTION TYPE:	Brick, Dryvit
HEAT SYSTEM:	Gas forced air (each unit)
AIR CONDITIONING:	Central (each unit)
PUBLIC TRANSPORTATION:	TARTA
HIGH-SPEED ACCESS:	Fiber



LEASING INFORMATION

ELECTRIC:	LESSEE
GAS:	LESSEE
SUITE JANITORIAL:	LESSEE
COMMON AREA MAINTENANCE:	LESSOR*
REAL ESTATE TAXES:	LESSOR*

* Prorated and billed to tenant

All information furnished as submitted may be subject to errors and omissions. No warranty or representation is made as to accuracy thereof.

Brokers Welcome!



To search for more available office space, please visit our website at:
www.jmsrealestate.com

2754 Centennial Road • Toledo, OH 43615 • 419/843-4988